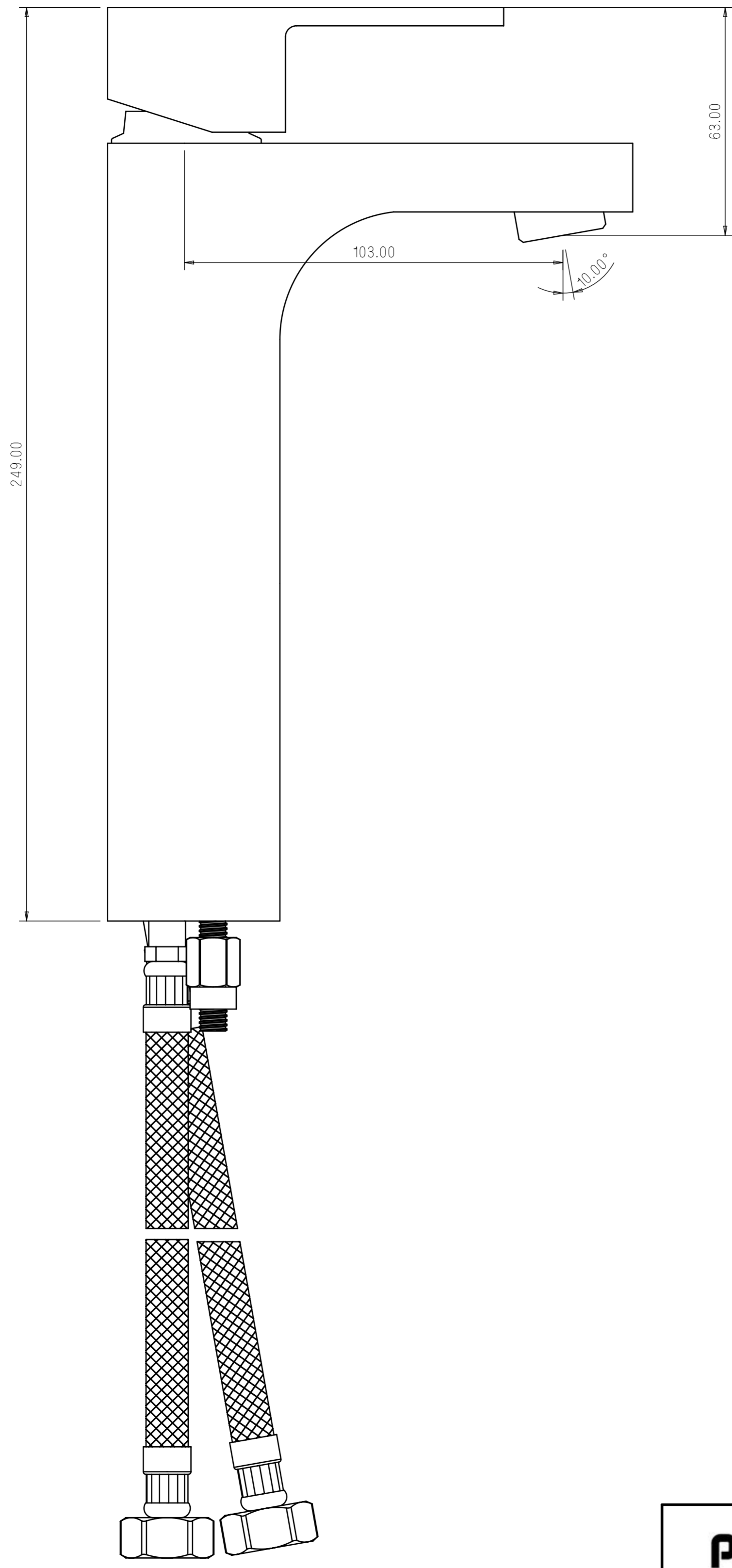
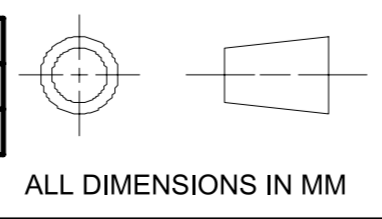


GENERAL TOLERANCE ±0.1mm UNLESS SPECIFIED



| Flow Rate in LPM at |         |         |         |
|---------------------|---------|---------|---------|
| 0.5 BAR             | 1.0 BAR | 2.0 BAR | 3.0 BAR |
| 6.00                | 8.20    | 12.1    | 15.0    |

SCALE -1:1



|            |  |   |      |
|------------|--|---|------|
|            |  | PRAYAG POLYMERS (P) LTD.                          |      |
|            |  | A-1129, Phase-III, RIICO Indl.Area, Bhiwadi(Raj.) |      |
| DRAWN BY   |  | TITLE   |      |
| CHECKED BY |  | SIZE  | DATE |
| TYPE       |  | CAT NO 7152                                       |      |
| MATERIAL   |  | WEIGHT  |      |

480.0 x 420.0